

CLIFF

30A. TERMINAL TP44

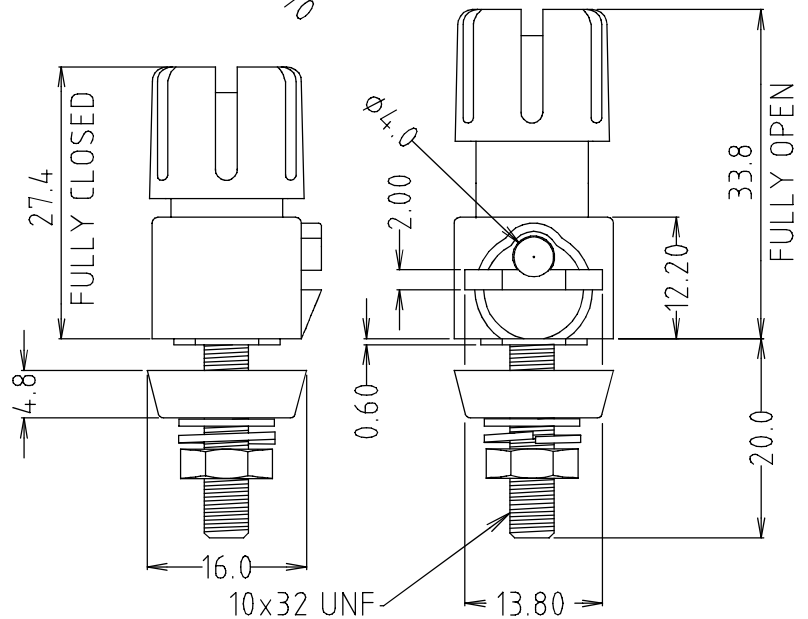
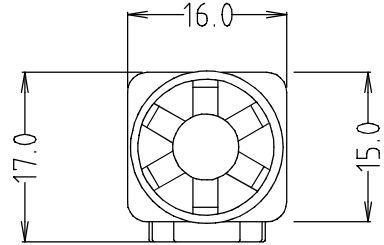
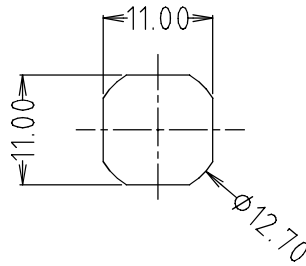


CL15941 - TP44 BLACK



CL15942 - TP44 RED

PANEL MOUNTING
DETAIL



Specification

Maximum Current: 30A.

Contact Resistance: Nickel <30mΩ,

Temperature Rating: -20°C to +80°C

Flammability: Minimum UL 94HB