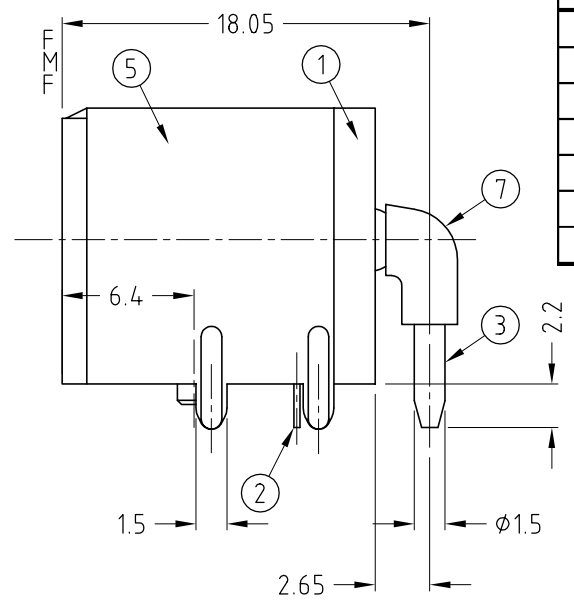
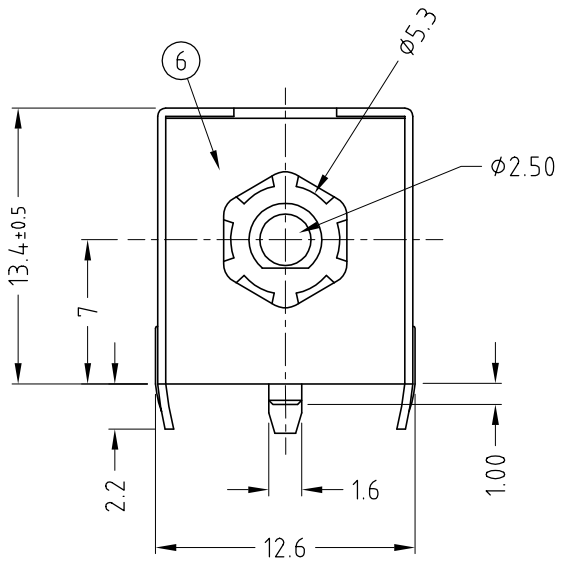
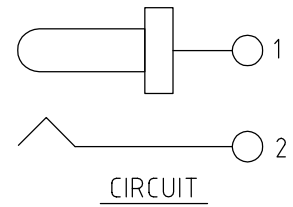
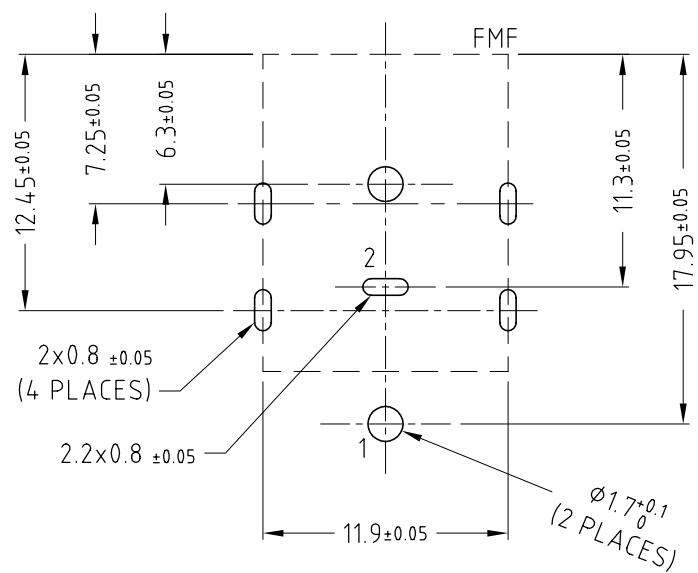
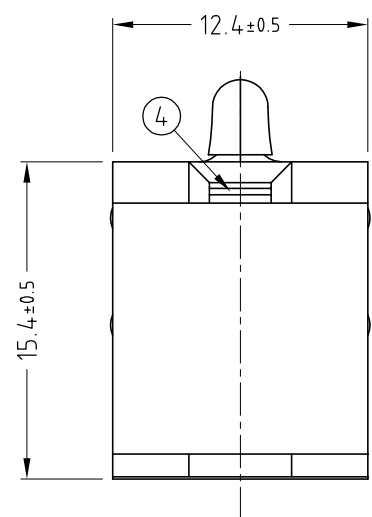


ISS.	AMEND	DATE
1	1st DRAWN	21/12/07
2	SPECN / PACKING ADD	15/01/07
3	Ø2.1 VARIANT DEL	21/11/12
4	ERR WAS 4.3uF+500MΩ	11/11/16
5	ADD MAT. TABLE	11/01/17



ITEM	DESCRIPTION	MATERIAL	FINISH
1	BODY	HIGHT TEMP THERMOPLASTIC	BLACK
2	TIP	COPPER ALLOY	TIN PLATE
3	PIN	BRASS BAR	SILVER PLATE
4	TERMINAL	STAINLESS STEEL	N/A
5	SHIELDING	SPCC-SD STEEL	NICKEL PLATE
6	GROUNDING	STAINLESS STEEL	N/A
7	HEAT SHRINK	POLYOLEFIN	BLACK

SPECIFICATION (WITH APPROVED PLUG)
 RATED: 10A / 20V 43uF
 INSERTION FORCE: 2.5Kg max
 WITHDRAWAL FORCE: 1.0Kg~2.5Kg
 INSULATION RESISTANCE: >100MΩ@500VDC
 WITHSTAND VOLTAGE: 250VAC/1 MIN
 CONTACT RESISTANCE: <7mΩ

SUPPLIED TAPED + REELED 100x PER REEL

RoHS COMPLIANT
DO NOT SCALE

Cliff Electronic Components Ltd.
 76 Holmehorpe Avenue, Holmehorpe Industrial Estate,
 Redhill, Surrey, RH1 2PF, England, UK
 Tel: 01737-771375 Fax: 01737-766012 Website: www.cliffuk.co.uk

THE CONTENTS OF THIS DOCUMENT MUST NOT BE COPIED OR DISCLOSED TO A 3rd PARTY WITHOUT WRITTEN PERMISSION OF CLIFF UK. © 2007

DIMENSIONS IN MILLIMETERS UNLESS OTHERWISE STATED. WORK TO DIMENSIONS. REMOVE ALL BURRS. IF IN DOUBT ASK.

MATERIAL: SEE TABLE
 FINISH: SEE TABLE - PACKED ON TAPE / REEL
 DRAWN: C.A.M.J. APPROVED: R.W.T.

3rd ANGLE PROJECTION:

TITLE: DC POWER SOCKET Ø2.5mm

DRWG. No. **FC681495** FORM: A4DRWGH